

HUGE CONGER EEL LANDED AT ELIE.

EXCITING STRUGGLE ON THE BEACH.

An enormous conger eel has been caught in the salmon nets at Earlsferry, Elie.

Following his usual practice, Mr John Webster proceeded to his nets, and had not sooner touched the gear than there was a wild commotion in the sea. Looking into the water, he saw the body of a huge eel. With his salmon cleek he attacked it, and eventually hooked it by the head.

The eel became furious, and lashed the water with its great tail, ultimately dislodging the cleek. Procuring a length of stout rope, he fixed the cleek firmly to it, and again proceeded in getting the eel by the head.

Seizing the rope, he slung it over his shoulder, and started up the beach. The eel was easily the master, and had Mr Webster hauled back into the water, when it changed its course, and made tracks for its captor. Tying the rope to a post, he went for assistance, and with the help of two men landed the eel, which was 7 feet in length and weighed over 100 lbs., the actual flesh turning the scale at 78 lbs.

This is believed to be a record weight for a conger eel, which is a very rare fish of any size in the Forth. There is a theory that the operations in the North Sea are driving the larger fish, of which there is a considerable number, to the quieter waters of the Forth.

Crime and vandalism in Elie in the season of good will . . .

- During the summer some gardens sheds were broken into in Park Place and items stolen – an object lesson perhaps that Elie is not as secure as it used to be? Oh and someone vandalised the bus shelter – breaking the glass – Why?

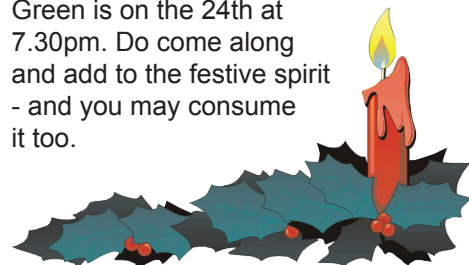


Events at Christmas

Carol's Shop is opening every weekend until Christmas and then the week between Christmas and New Year. It has new stock including new present boxes for Christmas and First Footing. Worth a visit.

Elie Fayre Day Group have arrangements in hand for the purchase, erection and decoration of the village Christmas Tree. The Fayre Day Princess Ailsa Godfrey will switch on the lights on Saturday 19th after the Traditional Santa's Parade which starts at 6pm from the Baker's corner. Santa will be there to hand out presents to the local children and his helpers will hand out the mulled wine and mince pies to the adults.

Carol Singing round the Tree on the Green is on the 24th at 7.30pm. Do come along and add to the festive spirit - and you may consume it too.



The Year Ahead

History Society Events

– they continue to meet for coffee on alternate Wednesdays 1045 at the Pavilion. Next one due **16th December** and fortnightly thereafter. The programme for next year

14th January Gordon Affleck on "The Golfers" a painting by Charles Lees and spots about famous Elie golfers.

11th February members night – various short spots on local history **17th March** Nick Cooke of Scottish Pilgrims Route Forum on the Pilgrims route through Fife. **14th April** Early days of the Discovery of Scotland as a tourist destination by Alastair Durie **18th May** outing to Dundee and Glamis

Wall at West House, Breakwater.

You will be aware of the small wall enclosing part of South Street at the breakwater which was erected by the owners of West House. Fife council take the view that they have no right to do so and have raised an action to clarify the position. A preliminary hearing is set for January.





ELIE HERALD

WINTER EDITION - 2015



Garden and window box competition winners

The winners this year are Douglas and Leslie Humphreys whose garden was adjudged to be the most spectacular. The window boxes section was won by Mr & Mrs Edwards. Neither recipients were available for comment when the Herald reporter contacted them but there is a rumour that Douglas acquired his green fingers from his many years thumbing the magazines in his newspaper shop or perhaps it was all down to Leslie. The Herald reporter tried to doorstep them but could not find a convenient step. Congratulations to the residents of Woodside.



Our photographs show the winners of the competitions being presented with their prizes at the Community Council meeting in October by the Chair - Mr Jim Robertson.



Bank branch closure

– the closure of the Royal Branch has had some knock on effects. There is no CCTV camera at the ATM so there is no record of attendees and withdrawals. There have been occasions anecdotally where a card has either been swallowed or the card has taken an alarmingly long time to be spat out. There is no sign at the old bank premises showing the visit times of tardis bank and the waste paper basket has been taped up presumably to avoid having to empty it ! All these matters are being taken up with the bank and we hope that there will be something to report next time. We're on the case !



Braids Bar has applied for a variation of its licence to enable it to play live music. Remember the ball room at Queens Hotel..... long time ago.

Black bags in Park Place

There were a few issues during the summer in relation to the predatory seagulls attacking the Fife Council bin bags which of necessity have to be used by some of Park Place residents and others. The suggestion is to put an old blanket on the bags when putting them out the night before collection thereby frustrating the gulls.



Speeding and parking

We are still trying to get some movement here. It was thought that because the main road into and out of Elie was an A class road a 20mph speed limit would not be acceptable however it is noted that Lundin Links have succeeded in the stretch between Mercury Motors and the shops. We need firstly to get monitoring equipment to gauge the speed of vehicles arriving at either end. There is a strong demand for this equipment so we have to wait in a queue. Summer parking continues to raise everyone's hackles. The situation in Links Road was irresponsible. There is simply not enough room especially nearer the 19th for parking on both sides of the road. No lorry can get through the gap. Please be responsible in parking cars. Another issue has arisen at Wadeslea. People presumably visiting the Ship are parking at the top of Admiralty Lane and into Wadeslea which is obstructing egress from driveways. This is very silly. Since the police response time is nearer 30 mins anyone whose egress is obstructed cannot summon assistance. Can we get a community agreement to take issue with those we see parking irresponsibly. A gentle suggestion that they might be causing an obstruction should be enough to prick a conscience if not then resort to Tony Sopranos methods !...well perhaps not.

If you have enjoyed reading this newsletter, a small donation towards the production costs would be greatly appreciated. Thank you . . .

Water Pressure Problems . . .

If you tried to take a shower in the early part of the summer holidays your trickle would have been disappointing.



It was seem that consumers in Earlsferry complained so Scottish Water operated a valve switch which had the effect of reducing the Elie supply to a trickle. We are glad to report that thanks to the intervention of Councillor Riches the definitive position is that there was a fault at a valve at Ovenstone farm which resulted in the pressure varying. That has now been fixed and a monitoring exercise undertaken. It is hoped that we may now have consistent water pressure.

Wadeslea Park now has an uncertain future . . .

What is known as Recreation Park or otherwise the football pitch at Wadeslea has up to now been leased by Fife Council from Elie Estates. The Council have maintained it. With budget cutbacks however the Council have intimated that they intend to give up the lease of the area whereupon it will revert to Elie Estate. The Community Council are trying to find out if it is the intention of Elie Estates to retain this area as a public park and if so who is to maintain it.

ENCAP

Yet another acronym. You may or may not have heard of this organisation. In effect it is a medium to long term plan for the development of the East Neuk. Broadly the idea is to find out from the various communities what would enhance the experience of them and put in place projects (presumably funded) to implement the wishes of the community. The first project manager has been employed (Mia Gonzalez-Noda) who will be trying to find out what our community is looking for to enhance the living experience. She wrote: "The East Neuk Community Action Plan (ENCAP) project has invited East Neuk and Landward communities to indicate their willingness to be the first community to come forward with plans to develop their own Community Action Plan.



Project Officer Mia Gonzalez-Noda, also a resident of Elie is delighted to say that they have had a positive response and will be in a position to choose the first community by the end of December.

Community actions plans are very useful if there are particular issues within your area that your community would like to solve e.g lack of affordable housing, loss of local services, lack of employment opportunities, etc.

An action plan will summarise views about the community, its vision for the future, the issues that matter most to the community and the priorities for projects and action.

For each community action plan throughout the East Neuk, views will be gathered from the community by issuing surveys to all houses, holding stakeholder interviews and an open day will be held to prioritise the projects.

ENCAP are looking to train a number of Community Agents to help with the data gathering exercise, who will become self employed on a part time basis over the course of the development of the community action plan. ENCAP are also looking for a voluntary Treasurer to assist with the accounts.

Please contact Mia Gonzalez-Noda if you are interested in becoming a Community Agent or wish to apply for the position of Treasurer. For further information please contact Mia Gonzalez-Noda ENCAP Project Officer encap.officer@gmail.com Mobile: 07548182186

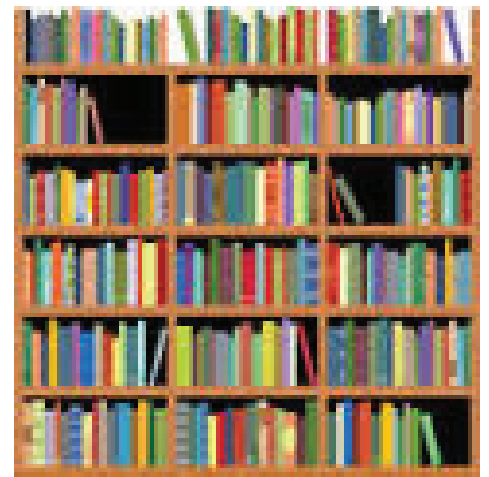
She will be addressing the Community Council at its meeting on 11th January so please come along and see what it's all about.

Updates for you . . .

Broadband A company has now been incorporated to promote the community broadband scheme for this not able to get superfast broadband or even those who even if they get it are unhappy with the speeds. The company will be putting a contract out to tender soon to get a supplier on board. Because it is a large contract it requires to be advertised in Europe so there will be a delay. However it is hoped that say by autumn we might see a new broadband system in operation to get up to 30 megabytes per second. This may well be better than BT superfast.

Beach Cleaning Fife Council's budget squeeze is likely to affect many things including the cleaning of the beach. There will be a meeting in the new year to discuss this and it may be that the community itself might get together to arrange the beach cleaning. It is a vital part of the tourist front for this village.

Coffee Shop – we have been wondering how Martin was getting on with the coffee shop its windows having been traditionally obscured for ages and Garland's entire fleet of vehicles parked permanently outside. He tells us that he is making good progress "we anticipate that the works will be completed some time in January which would allow us to open later in February or early March. At the current time new drains have been completed and much of the internal works to the new wall linings is well underway. Major repairs are being carried out to the flat roof above the kitchen and toilets and the building has been completely replumbed and rewired. Works will also include a new kitchen, allowing for an expanded menu, and a new counter positioned at the front in the west window area. We are also taking the opportunity to create an additional disabled accessible toilet and to replace the front door allowing better wheel chair access. We are going to rename the business, and the refurbished Coffee House and Kitchen will be called "Sands of Elie". We wish him success and the kitchen extension suggests that he will be providing a bit more than just coffee and traybakes.



Elie Library will stay open . . .

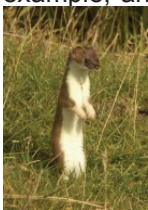
The Elie Library was not on the list of closures but the Community Council is anxious to see if better use can be made of the facilities. There is a meeting shortly to discuss this with the cultural trust but in the meantime please let us know if you would be interested in using the premises for your little group meeting.



From Dr. Doolittle - Overnight parking at Woodhaven carpark

Something stoataly different

I talk to the animals. For example, an “onk-onk-onk” from the back of the throat successfully holds the attention of both geese (when they are on the ground) and seals. A harsh “prack prack” causes ravens to pause in their aerial pursuits and move closer to investigate the source. A sneeze is the alarm call of blackface sheep and will bring every head on a hillside swivelling in your direction.... and a bark followed by an asthmatic sneeze will cause both roe and red deer to halt in flight and even approach the instigator. This latter ruse is best not employed during the rutting season. One of my most successful encounters arose through whistling. I was walking through a leafy oakwood in early summer in pursuit of I know not what, when a rapid movement in an otherwise immobile landscape caught my eye. About fifty yards away, a dark russet creature was darting in and out of the crevices of an old stone dyke hunting for this and that. Its lithe body and long, black tipped tail indicated a stoat. I dug deep into my mental animal audio thesaurus and came up with a “tss-tss-tss” sound produced between tongue and teeth.



To my delight, the stoat abruptly concluded its mural investigations and sat up very straight, regarding me with beady eyes. It obviously decided that the mystery of stone dykes was no match for the sight of a peculiar, welly-clad tree that whistled, and it proceeded to circle round me through the bracken, at a circumspect distance. Remaining as still as possible, I continued to emit the magic sound and, all the while, the stoat circled closer and closer. How near would it come? Five yards, four, three – surely not! But there it stood, one forepaw resting on my boot, button nose pointing skywards, whiskers aquiver. It regarded me steadily for about a minute, then, with what amounted to a stoatish grunt of “huh” it turned and ambled off, pausing now and again to examine a treeroot or rabbit burrow where perhaps still yet greater curiosities might be awaiting discovery. I have since found that the same whistling sound also works wonders with cats, causing them to entwine round one’s ankles in delight. Do you suppose that would have the same effect on lions? (mm I doubt it- if anything it deters lions as evidenced by their recent absence from the boondocks hereabouts. Ed)



We have mentioned in the past the proliferation of mobile homes that seem to avoid having to pay for their night’s stay by occupying the light house car park. Some even make a week of it. Some monitoring over the summer has shown up to 8 or 9 caravanettes making use of the facilities despite there being a clear sign indicating no overnight parking. The community council initially took the view that this should be tolerated but subsequently investigations are on going as to what if anything could be done about this. If you have views about whether this should be tolerated or not please let us know.

Butterflies are back

You will recall our plea last year for the butterflies endangered at Kincaig. Hamish Johnstone of Colinsburgh was happy to tell us that they came back this year and the colony seems to have survived the trauma of their habitat being burnt by ignited hay bales.



Town Hall Earlsferry - Weathervane re-aligned

– So we have managed to get the Weathervane re-instated or rather remanufactured but it seems that the points of the compass are far from accurate. Next time you are passing could you pop up and point it to north as best you can.

