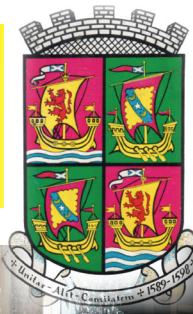


ELIE HERALD

SUMMER EXTRA EDITION - JULY 2015



Beautiful Gardens and Window Boxes

Community Council are running two competitions for gardens this year. First is the Mackenzie Trophy for the best window boxes but we have a new one for the best garden (must be able to be seen from the road). The judging will take place clandestinely and winners announced perhaps mid August. Other than the trophies there are no prizes except the kudos! Oh yes and you can get to attend the CC meeting to get the prize.....how's that?



Overnight parking of Caravans and Camper Vans in the villages annoys residents –

Overnight parking of Caravans and Camper Vans in the villages – at times the villages can resemble a Winnebago convention and people have been sleeping in their vans at various places in the villages. We must try to discourage this – there are perfectly good sites at St.Monans and Shell Bay –you do have to pay but at least you get a shower, and don't have angry residents banging on the side of your van. Please use the proper parks. And certainly not lighthouse car park they are banned overnight.



Our improvements

Golf Club & Pavilion

The structural improvements to Golf Club and Pavilion have proceeded to be finished and a fine result. Coffee shop seems to have stalled but on speaking to Martin he has come across a few issues in doing the place up and is awaiting planning and building control approval. Pity he might miss the summer rush but we still wish him well.

The Ship Inn & 19th Hole

seem to be almost fully open now but not without a few difficulties not of their making. Fife Council have been rather remiss in not clearing the beach of seaweed at the front of The Ship despite promises, with the result that not only as there been a vile smell but it is a breeding ground for Bibio Marci better known as St. Marks flies which breed in abundance on the seaweed. Their life span is relatively short but nevertheless there are swarms and swarms of them such that even if the weather had been good people could not sit outside the ship. Hopefully that is now past.

Carol's Shop

Because of Carols indisposition the shop is now being run on similar lines by Holiday Essentials a relatively new venture. This organisation will put presentation boxes into rented houses showing off the best in local produce to try to encourage more people to use local suppliers. The shop will continued as an ice cream shop .Do pay it a visit .

Consider this generous offer . . .

Talking of rented houses. When your tenants/guests have left there might be a lot of food left behind – why not donate this to local food banks. At the end of the St. Andrews Univ term they collect van loads. Contact Graham Johnston on gjeleicc@btinternet.com for details.



Nice to see a lot of beach huts up this year. Going back to old times when the beach from breakwater to Ferry Road was almost a continuous line of beach huts. They sort of went out of fashion but seem to be back. Lorraine Barclay on 330399 will supply. If it's a DIY one please make sure that you do not erode the bents when you place your hut and remember that the beach is not a free for all. Many proprietors of beach side properties own the land down to high water mark.



History Society and Chapel Green project

Progress is being made in clearing the weeds at chapel green and hopefully the old building will at last be visible and enjoyed. This is going to take time to clear up so please be patient and if you want to lend a hand we are looking for a motor mower and few willing shoulders. The History Society are doing some Elie and Earlsferry Walks this summer look around for posters but the main one will be on 26th July – that's the Sunday after Elie Fayre day when we will be doing Elie Walk at 1130 Meet at Toll Green bus shelter and Earlsferry one in the after noon at 2.15 meet at Earlsferry Town Hall - they are free and great. Also Evening Earlsferry Stroll - meet 6.30 at Town Hall on Wednesday 5th August.



Produced July 2015 by: -
Elie & Earlsferry Community Council.
Editor: Graham Johnston
Graphic composition: Steve Blaney
Comments and contributions to the Editor

WRI things

Elie Fayre Day 25th July will have baking stall - nummy - Great Tapestry - Margaret Lambie is organising an outing to see it at Kirkcaldy 27th August then for autumn season, September will be Fiona Pollock talking about Ardross Farm shop - nummy - October is film night (Open Meeting) November sees the AGM and December has the Christmas party nummy. It's nummy all the way!



History Society starts its Autumn season

with the ever popular quiz night on Friday 11th September (note new date) tickets at usual outlets. Book early and often. Then on 15th October Graham Johnston will be telling us about the Elie Murder? or was it? Then 19th November AGM and Family History Night - it is hoped to have a short introduction from a number of members who have researched their family histories and please come along with some information about your ancestors and challenge our participants to find them. DNA samples not required. Programme resumes in the New Year. and

coffee mornings -

2 Church Coffee Mornings - one on Wed. 15th July and the other on Wed. 12th August both in Elie Church Hall, 10 to 11.30 a.m. more nummy



Toilets

You might be excused for thinking that the CC is obsessed with toilets. Well we are. We lost the one at Earlsferry Town Hall (q.v. earlier editions), the one at the Harbour is functioning well and Stenton Row also but there is a dearth of facilities between Chapel Green and Stenton Row (other than al fresco). We would like to have a Port-a-loo or the same somewhere in Earlsferry to assist tourists but alas Fife Council cannot fund it. We will keep trying but it is trying.



Library

You will have seen the wide closures proposed by Fife Cultural Trust - they run them- Elie has not been included on that list yet. We would hope that we can reach an accommodation with the Trust to use the premises for occasional meetings and groups for example a photography club and a family history research project, even bridge classes, art classes and other such cultural pursuits. We are opening a dialogue with the Trust so hopefully we can have something up and running in the Autumn.

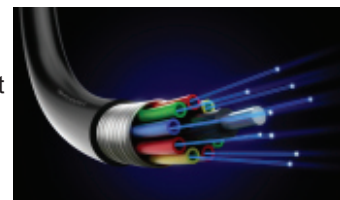
New defibrillator

We are putting in another defibrillator this time as near Earlsferry as we can. It will be sited on the wall of Earlsferry Care Home.



Broadband and 4G -

Bt vans have been everywhere recently except in this vicinity because the view is that we will not be able to get the new fibre optic broadband. The East Neuk Community Council Joint Forum is working on this and hope to get an alternative arrangement in place soon to enable us all to get reasonable broadband speeds. Talking of which much of Fife is now 4G enabled for our phone but you will notice that this little corner (and a few others to be fair) are not but if you are 4G savvy you will get a reception from Leven westward, a little at St. Andrews - its mostly 3G - but across the Tay Bridge is sings merrily at 4G. Bit disappointing really. Don't go by the web site - nice colours most of the reception in this part of the world seems to be in the middle - and I mean middle - of fields - not really worth the trek.



Muir Homes Developments in Elie & Earlsferry

Muir Homes have applied for permission to build initially 57 homes and subsequently double that on the area of ground between the manse at St. Monans (that's the first old building you come to before the fish shops) and westwards to the track up to Newark. No doubt since it is a major development it will require careful scrutiny but it might be a useful test if the development plan of Fife due out next year includes Wadeslea and Grange Road being zoned for development.

And this piece of buzz from our nature correspondent.

Sting in the tale -

Early one year a tree wasp appeared in the smallest room of the house and it set to in a corner of the ceiling to construct what can best be described as a Chinese hat suspended by a stalk "Dinae worry!", I told my other half, "Yon's a solitary wasp and will provide hours of interesting and scientific study." She was not convinced. Construction continued throughout the ensuing weeks. As it increased to the size of a small tennis ball (are there big ones? ed), I again assured the other half from my extensive and excellent knowledge base that the structure was designed for a relatively small family in wasp terms. Imagine my concern when, on consulting my knowledgebase (aka as a text book), I learned that my erstwhile companion was capable of producing up to 3000 units for co-habitants. Various constructs involving polythene sheeting were installed betwixt nest and window but eventually the edict was pronounced...I was instructed that despite their contribution to scientific research the non-paying guests would have to go. I decided on relocation to a more



rural environment. Armed with a plastic jug from a food processor and a sharp kitchen knife I detached the nest and removed it to a nearby hollow tree stump and ne'er a whimper was heard...a buzz, yes, but nae whimpering...they seemed to accept their new accommodation as a viable alternative and they lived there happily ever after.... well, in wasp terms that is a little short but instead we now have mice. I am studying them closely for scientific purposes you understand.

By Squadron Leader

A BLAST FROM THE PAST TO ENJOY IN THE PRESENT . . .

by antiquarians and historians. From Earlsferry we make our way back by

THE SPLENDID BEACH,
with its long expanse of soft golden sand, which makes such an admirable bathing ground when the tide is in. The houses have stairs down to the beach, and many have arbours and tents in the gardens, where holiday-makers may sit and enjoy the bracing air of the East Coast. No wonder the visitors to Elie just now are so very largely from Glasgow. It is all very well to "gang doon the watter," and no one will deny the manifold beauties of the Clyde: But for strong, bracing, invigorating air, Glasgow must come to the East Coast. Our stroll ends at the pier, where the Galloway steamers call regularly on cruises to the Isle of May, the Bass, North Berwick, and other places. From this point we get a fine bird's-eye view of the long, sweeping bay, studded with brown shelving rocks, and the picturesque houses fringing the yellow sand. To-day the place is alive with visitors of all ages, and especially with children, who find the beach such a capital playground. Needless to say, there are cyclists by the score, while the horse-riders seem to be busy with driving parties. The evening trains bring home husbands and brothers, who will have time for a round of the links or a spin along the roads ere the daylight comes to an end. 18th July 1899

If you have enjoyed reading this newsletter, a small donation towards the production costs would be greatly appreciated.

Thank you . . .

We are also now on Facebook - visit us and see what's going on at:-
"Elie and Royal Burgh of Earlsferry Community Council"

