

# Toll Green Update



## Community Collaborative Created

A company limited by guarantee has been incorporated among other things to try to acquire Toll Green Hall for the benefit of the community. The company invites all to become members of it. And annexed to this edition is an application form for membership and an explanation of what it involves. The more members we can get the more it will represent the community and we will be able to call on a wide variety of expertise in various areas when and if the time comes. An application has been lodged with the Scottish Office to recognise the company Elie and Earlsferry Community Collaborative Ltd (Comcol) as qualified to seek a community buy out of the hall. As yet nothing has been heard from the Church of Scotland General Trustees who own the hall but it is hoped that discussions may be entered into in due course. The directors are under no illusion that this will be a quick and easy process and there are likely to be many hurdles on the way but the company is committed to seeing whether a community buy out and subsequent establishment of a community centre for various wide ranging activities can be viable.

## Earlsferry Town Hall

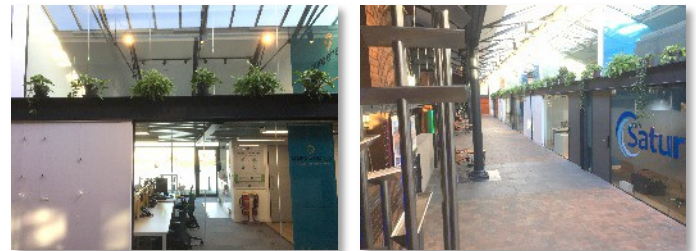
The Earlsferry Town Hall Group of course continues their good work to try to achieve a community transfer of the hall from Fife Council to the Community and the two initiatives are currently not linked. However, the Comcol is keen to look at other projects within the community that might benefit from its expertise and indeed some of the interesting suggestions put forward in the Charette are being discussed. The company is also keen to recruit members of as many community bodies as possible to have an input into its future so please get in touch with the company via email address [gjarlsferry@btinternet.com](mailto:gjarlsferry@btinternet.com). A website is being developed and it is intended to hold a workshop/seminar in the Sailing Club on Saturday 8<sup>th</sup> February 2020 during which the various innovations and changes to Toll Green, The Harbour and a Golf Heritage Trail/Visitors centre and other developments will be discussed. We would hope that the seminar will be free and a more comprehensive flyer will be sent to all those members who might be interested in attending and have an influence on the process. Perhaps more to the point is the invitation on the last pages of this publication to become members of the company. Simply pull off the last page, complete



your details and get it to us either at 1 Elie House or via any of the directors who currently are, Graham Meacher, Ron Oliver, Alastair and Barbara Graham, Shona Jones, Graham Johnston, Jim Robertson and Ian McIntosh.

## Office space and development

Whilst we are on the subject of the Town Hall we had occasion to visit the Waterfront office development at Dundee. Among other things they have created a number of small office units in an old quay side warehouse and whilst its dimensions are substantially larger than Earlsferry Town hall it is clear that not only is such a development feasible but there seems to be no lack of takers for the units. Here are a couple of shots of the interior.



Perhaps the back of the old Town Hall could be removed and car parking space made available using the grass area behind and with two levels there could be at least four small offices and usual facilities. If the Toll Green proposals take off this would be a very useful adjunct to the facilities of Elie and Earlsferry and could provide employment for some in the area.

## Another Award for Ardross

The History Society is delighted to announce the presentation of their prestigious 'David Thomson Award' to the Pollock family at Ardross Farm. The award is in recognition of their outstanding achievement in creating a diversified business and their contribution to the local economy and community. We were so sorry to hear of Robbie's death and our best wishes go to the whole family.



## Charette Visions

Many of the suggestions from the villagers incorporated into the charette are conducive to increasing the Elie and Earlsferry “experience” without detracting from its essential *raison d’etre* of being a holiday destination. One of these suggestions was a look at reconfiguring Toll Green to make the green space more accessible and at the same time jackdaw proof if possible. At the moment it is on the wrong side of the road as it were for recreation unless you carry your pint across from the Station Buffet. Some ideas included reconfiguring it to enable there to be a pedestrian precinct type area nearest the north side have been put forward. Whilst these matters are debated and considered the Environmental Action Group and the History Society have been looking at our almost unique water fountain at the corner of Stenton Row. This fountain is one of only two still in existence. The

other one is in Faversham. It was constructed by the Sun Foundry in Glasgow and erected in 1860. Whilst it is not practical to reinstate its function - it was a cow handled pump apparently and we don’t think that means operated by a bovine - - there is certainly scope for repainting it and making it a more prominent feature of Toll Green. Currently ideas are of opening out that corner a little bit and putting benches round the refurbished fountain and story boards explaining its history.



## Golf Heritage Centre and Museum

It is perhaps not as well-known as it should be that Earlsferry and to a lesser extent Elie was a pioneer area in golf club making and golfers from the mid 19<sup>th</sup> Century for about 100 years. Not only were Earlsferry manufactured golf clubs much sought after there was a significant Diaspora of good and subsequently professional golfers from Elie and Earlsferry especially to the United States. Many of these golf professionals became pioneers in their field and it would be a pity if this legacy were to be lost. The establishment of a golf heritage museum in the village would not only do much to keep the importance of this contribution to golf history alive but also act as a tourist attraction. Preliminary discussions have taken place with the golf club and we will convene a seminar with stake holders (like the various golf clubs etc) to see whether there could be an appetite for such a venture. (See supra) Again it is early days yet but one idea being mooted is to build an extension to the current pavilion and incorporate the cafe/restaurant side into the museum. Any thoughts and suggestions would be more than welcome - please contact the Golf House Club or any of the other golf/sports club bodies or Comcol as above.



## Road changes

It will not have escaped anyone’s notice that a mini mushroom roundabout has been constructed at Park Place/High Street Corner. Views are divided - mostly that

it is unnecessary and why should the community council have sanctioned it. In fairness to the community council the idea was first mooted some six or seven years ago and rejected for lack of available finance - the council were rather surprised - to put it mildly - that this far down the line anyone at Fife Council had remembered. However, we have it now and it remains to be seen whether it will improve the traffic flow or as the doom-sayers predict have the opposite effect.

## Community Council Meetings

The date and time of the meetings has been changed from Mondays to the second Tuesday in each month 7.30 Sailing club.

## Visitor Attractions

We have had a number of attractions more recently which have been slightly against the norm. Firstly, Bowhouse hosted the Scottish Ploughing Championship in the last weekend in October. A large attendance watched the experts ploughing straight and precise furrows in pristine land. To the layman one furrow looks rather like another but erudite aficionados with clip boards inspected the many plots and managed somehow to reach a conclusion. It was good to see such a turnout of spectators in addition to the huge agricultural input. If anyone wants their back garden expertly ploughed up for free we are sure a new host could be found for the next championships - and there were some golden oldies about too that’s the machinery of course.



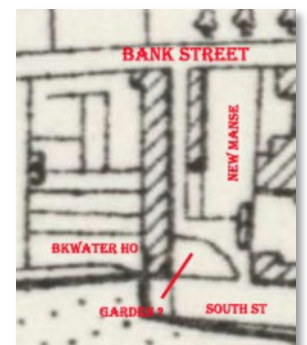
## Blasts from the Past

An inquiry has been received from Germany in relation to this photograph. It was taken apparently in 1942 on the golf course behind the Golf Hotel/Court and shows a polish paratrooper demonstrating his strength to local on lookers. The correspondent merely knows that the “strong man” was named Richard or its Polish equivalent but the correspondent is keen to find out if anyone can recognise and put a name to any of the faces in the photographs. Responses to [gjelihistory@btinternet.com](mailto:gjelihistory@btinternet.com)



## Car Parking (again)

In 1955 there was a small public planning inquiry in relation to the compulsory acquisition of garden ground at Breakwater House, which the Council wanted to turn into a car park and public toilet. Mrs Bow, the then proprietor of Breakwater House, understandably had a few reservations about her “garden” being acquired for a toilet and car park. We cannot find out what



happened as a result of this inquiry but judging by the current configuration of South Street and Breakwater house it cannot have succeeded but we were wondering whether this was the desert garden of Breakwater house as now or another piece of ground alongside. The garden seems hardly large enough for the proposal and it may have been that the land was where the new manse was built in 1960 or so. Anyone know? This is an early OS map pre-building of Manse.

### Accidents

Of course, the provision of the new ‘mushroom’<sup>1</sup> roundabout at the bottom of Park Place has yet to receive its fair beta testing and this will happen at New Year but it is noted that Belvedere the house next to Terras shoe shop that was, suffered structural damage when a lorry reversed into its front door. Wonder what repercussions would be if the south side of Toll Green/High Street was to become the main carriageway per a charette suggestion.



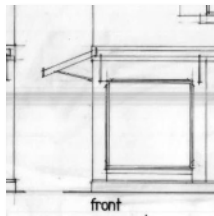
### Harbour Trust

There is much movement with the Harbour Trust at the moment. They are preparing a new website to enable visitors to book berths in the harbour and to publicise their activities. They are designing a new logo and looking to expand the facilities to attract visitors to the harbour area. We look forward to their developments which we hope will be discussed at the workshop/seminar (supra) in February next year.

### Fast Food Outlet

We suppose it was inevitable that sooner or later a fast food outlet would be established to service the influx of visitors in the summer. Anstruther is but 6 miles away but it would be more convenient to have such a place in Elie. And so the Fireside Tartan shop aka Steve Blaney’s office has received permission despite considerable objections to be converted into a fast food outlet. It is not exactly clear whether this will be an omnibus facility or specialise in curries, kebabs or whatever. The local N E Fife Planning committee met last week and granted a license for the premises subject to certain conditions:.

For the lifetime of the development, the opening hours of the hot food takeaway, shall be restricted to between 10:00 and 20:30 Monday to Sunday. Prior to the hot food takeaway coming into use, all works and noise mitigation measures shall be carried out in full. And a further test carried out prior to opening to ensure adjacent residential dwellings are not subjected to adverse noise from the development. . the addition of an advisory note that the applicant should ensure the adequate provision of bins in relation to the existing businesses. One slight worry - the plans show the staff toilet opening out into the food prep area - is that ok ? The awning has also been approved subject to the observation that if the applicant wants to have outside tables and chairs, a separate application will need to be made. It is a traditional Victorian type awning vide:



We suppose that there

is no surprise here that it should have been granted. The opening hours restriction would mean an embargo on it being open after 8.30 pm and it might be hoped that this would mitigate any rowdiness that tends to be associated with such premises. It remains to be seen also whether there would be sufficient business to sustain the premises over the quieter periods of the wintertime.

### Nature Corner instructive lesson



(1) (2) (3) (4)  
Butterflies

As, summer is now long gone and with it the glorious display of garden insects, of which the butterfly is the most conspicuous. But let me take you back to the glorious days of summer (global warming and all that) when we sat out in our garden after a strenuous bout of weeding, sipping a cooling drink and admiring the results of our hard work. Adding to this rich idyllic scene, butterflies take top spot. Tortoiseshells (1), Red Admirals, Large White, Small White and Orange Tip are relatively common but what of the Painted Lady?(2) This extraordinary Butterfly is migratory, arriving here from Europe and North Africa (600 miles in old money and at a speed of up to 10mph). In most years, they are scarce, but some seasons, there is a population explosion. Last summer was one of the them. Clouds of them were everywhere, there were almost too many to count. But, in common with most of our summers, there was a day of winds and heavy rain wiping them out. You might have noticed another fascinating insect in your garden, the Hummingbird (3), Hawk Moth, a migrant from Southern France (*it hums Frere Jacques and of garlic of course.*). It hovers while feeding with a wing speed that is just a blur and makes a high pitched humming sound (more audible to women than men!). Although fairly common a few years ago, I have not seen any since, so it obviously prefers a place in the sun (France). Another insect commonly seen is the Hoverfly (4), which is quite small, but easily seen. It is the gardeners' friend as its larvae feed on aphids. [Now you should never again misidentify a flying thingamajig. Who says this newspaper is not educational ?]

By our nature correspondent.....fluttering by

### Polo Match or the Hint with a Mole



Another innovation as it were was the beach polo match held by the Ship Inn on the harbour beach. It seems to have been a well-attended event and no doubt the bar profits were affected. Whether it will be repeated in a similar format is open to question. The ball just sinks deeper and deeper into the sand. Hence the need for the ‘hint with a mole’ (boom-boom!)



## Festive Attractions

**8<sup>th</sup> December:** Earlsferry Town Hall - Christmas with the Other Guys £10 A Capella group of singers from St. Andrews Univ. £10 Elie Newsagents

**Monday 9<sup>th</sup> December:** local hustings - Ship Inn hosts the candidates for the election - grab them while you can ....no speeches just frank exchange of views....*periculo petentis*



**14 15 December:** Pav Craft Weekend - no not boats etc the other craft (handi).

Wednesday **18<sup>th</sup> December:** Quiz Night at Ship Inn 8.00pm see Facebook for more info.

**21<sup>st</sup> December:** Santas Grotto Meet at Toll Green and process to Church Hall to meet Santa Need tickets £1 from Elie Newsagents, Carols shop and Elie Deli Check in by 18<sup>th</sup>

Sunday **22<sup>nd</sup> December:** Earlsferry Town Hall 5.00pm - "It's a Wonderful Life" - seasonal weepie.

Tuesday **24<sup>th</sup> December:** 7.00pm carols on the Green - great fun Karaoke on Toll Green ...that'll get rid of the jackdaws (kidding).



**29<sup>th</sup> December:** Community Cinema Earlsferry Town Hall 5.00pm Hairspray Magic delight great songs, etc. etc.

## New Year Celebrations

**N**one can object to you having a nice time on the beach on Hogmanay and setting off a few fireworks but please, as if you need reminding, clear up after your guests, pick up glass and extinguish fires. Have some consideration for animals who are frightened by fireworks.



## Out of Hours Medical Services

**Y**ou will of course be aware of the long campaign directed towards retaining the out of hours medical services at St. Andrews Hospital. The administrators had decided to close all such services resulting in patients having to travel to Kirkcaldy – Tayside were not keen to accept referrals from Fife. The campaign has been extensive and at times fraught with difficulty but due to the persistence of the Out of Hours Group the administrators have eventually relented and some services out of hours at St. Andrews have been reinstated. It remains to be seen if they can be sustained but the catchment population round St. Andrews really does justify such a facility especially during the University terms and summer influx (see Impact 100 in Courier).

## VIPER's Successor

**Y**ou will also remember (Herald Passim) that Steve Blaney's initiative for emergency provision has been adopted East Neuk wide and the poster below gives the details, We obviously hope it will never be necessary but now we know what do in such an event.



## Right of Way?

**T**he proprietor of one of the houses bordering on the causeway (aka road) to the harbour has decided that too much sand is blowing into the garden and wishes to fence off the walkway alongside the wall of the last garden on the harbour beach side which gives access to the harbour beach. Without it, walkers would have to either climb the enlarging dunes or walk all the way to the harbour to get access to the beach. There is a suggestion that this has been established as a right of way thereby preventing the owner from blocking it off. It would be a shame because that entry to Harbour Beach is frequently used by all and sundry and there is a form of disabled access ramp there enabling wheelchairs to enjoy the beach too. A move is afoot to try to get it established as a right of way. Whilst there is a degree of sympathy with those who live beachside and get inundated with blown sand it surely must be one of the natural drawbacks perhaps of living in such an ideal spot. Take the rough with the smooth - we say.

### STOP PRESS

SEPA have withdrawn their objections to Elie Estates Planning application. Hunch it may be dealt with on 11<sup>th</sup> December if not in February 2020

The **Elie Herald** welcomes feedback constructive or destructive and we can be contacted at [info@grahamjohnston.scot](mailto:info@grahamjohnston.scot) or if you want to look at previous editions visit: <http://www.elieandearlsferry.net>



# Elie and Earlsferry Community Collaborative Ltd.

Registered address: 1 Elie House, Elie, Fife KY9 1ER

## INVITATION TO APPLY FOR MEMBERSHIP OF ELIE & EARLSFERRY COMMUNITY COLLABORATIVE

The Elie and Earlsferry Community Collaborative (Comcol) is a recently formed company limited by guarantee. Its primary purpose is to act as the officially recognised 'Community Body' for the proposed acquisition and subsequent management of property for the benefit of the community, with Toll Green Hall being the current objective. The secondary purpose of Comcol is to explore and promote possible projects in the interests of the community and improvement of the locality.

Comcol has members, rather than shareholders, who are each entitled to:

- Receive a copy of the company's annual accounts;
- Attend general meetings and cast a vote;
- Elect directors by voting at the members' meeting; and
- Vote on any significant changes to the company, its purpose, its name or how any profit is applied.

Any profit made by the company will be retained as a contribution towards the cost of activities in future years. You will not, therefore, be entitled to receive any dividend or other distribution from the company, including if the company is wound up. Nor do you have any liability currently to contribute to its assets or liabilities.

The company's constitution is contained in the Articles of Association, a copy of which is available on request to the undersigned. There is currently no subscription required to become a member, but it may be necessary in the future for there to be a subscription levied by a meeting of the Company members in order to raise funds.

If you would like to apply for membership, please complete, sign and date the attached Letter of Application and return it to the above address.

There are two classes of membership:

**Full Membership** - entitling the member to vote at meetings of the Company. It is a prerequisite that a full member's name and address appears on the local Electoral Register for this area and is eligible to vote at elections and referenda.

**Associate Membership** - where the member does not qualify by appearing on the Electoral Register but is interested in the purpose and aims of the company. They are not allowed to stand for election to the Board of Directors or vote at any meetings but will be able to receive information about the company's business.

Please do not hesitate to contact us if you have any questions. Email [gjearlsferry@btinternet.com](mailto:gjearlsferry@btinternet.com)

### Elie and Earlsferry Community Collaborative Ltd. - APPLICATION FOR MEMBERSHIP

**Category of Membership applied for:** \*Full Member / \*Associate Member (\*please delete as appropriate)

Name.....

Postal Address.....

Elie/Earlsferry Address (if different from above) .....

Contact email .....

Contact 'phone.....

Preferred method of communication (\*delete as appropriate): \*Email / \*Post

#### **DECLARATION** (\*please delete as appropriate):

\*I confirm I am applying for **Full Membership** and that I am on the Electoral Register for the local area.

\*I confirm I am applying for **Associate Membership**.

**I confirm that in applying for membership I support the aims and objectives of the company and wish to take an interest in its projects.**

Signature .....Date.....

Please return completed form to: Graham Johnston, Comcol, 1 Elie House, Elie KY9 1ER



**GDPR Privacy Statement:** Comcol takes the privacy of our members data seriously and will only use your personal information for company administration purposes and for communicating with you about your membership and to update you on projects. Only the Chairman, Secretary and Treasurer will be able to access your details. We will never share or sell your data without your prior permission.