



## Editorial



The summer of 23 was for us residents notable. The weather in the main belied the BBC forecast of bad weather. The ground was hard and

dry and the sun shone. We welcomed as usual a large influx of holidaymakers from the day visitors (always welcome), the second home owners (always welcome if they contribute) and those renting for holidays (ditto). The time was not without its incidence of bad behaviour although not all can be ascribed to the visiting youngsters. We had a very unpleasant incident at the harbour where three youths were observed and recorded on CCTV cameras throwing a duckling about and tampering with moorings. It is hoped that they were recognised from the postings on social media and made to understand the error of their ways. One of the flags flying at the harbour flagpole was removed and burnt



although there did not appear to have been an international political protesting connection. Drunkenness and rowdy behaviour seemed to increase and Woodside was used as a playground for the teenage drunkards. Teenagers had been gathering at the park. They then proceeded to target the houses round the park with windows banged on and attempts made to kick front doors in. This has been accompanied by shouting, swearing and intimidation of the neighbours. Much noise and disruption was intended to try the patience of the residents - which it did. Rumours abounded as to the source of this disruption, and it seems that there were a number of youngsters demob happy from an Edinburgh fee paying school whose parents apparently rented two houses for their post educational blowout. We were all young once - for some a long time ago - but we would have hoped that then we were a little more tolerant of our elders. The Community Council reported teenagers had been partying on the beach as well as at the park. It was noted that some teenagers have been using fake ID to purchase alcohol. The local Community Police attended the CC meeting and had been appraised of the situation.

### Police Presence

The police were asked to increase (?) their patrols but so often the door was closed after the horses had bolted. Please respect our lovely village and please, parents of demob happy teenagers, instil in them a degree of respect for our environment or alternatively supervise them.. Some would say "Poor show, Poor show",

If that was not enough the beach goers were treated to weever fish with their spiny backs, Lion's Mane jellyfish with their stinging tails and sundry broken glass and nails from beach barbeques and parties.



## Toll Green

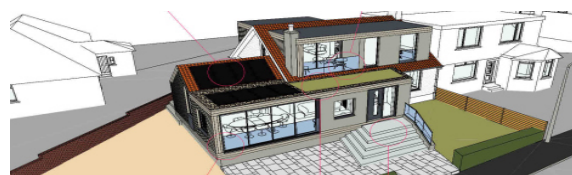
We are still awaiting confirmation from FC that work on the trees will take place soon and that the two dead trees will be removed. The proposal is for the dead trees to be replaced by ornamental trees. Councillor Hayes will follow this up with Fife Council but we are hopeful that once we publish action may be seen.

## Planning

A recent planning application to develop a house and site at Wadeslea has been before the community council viz:



This seems somewhat out of place with the rest of Wadeslea notwithstanding some developments there which have departed from the traditional design. No doubt the view out from inside is impressive which is more than can be said about the view from outside in. However, as a result of representations by the community council the architects and owners have modified their plans and the new proposal seems to be more acceptable. This is an example of the influence the community council can have on planning.



## Community Council

This September the Community Council personnel changed with an election. As it happened six members of the community expressed an interest in joining the community council and since the allocation for this area is 8, 5 were deemed to have been elected. One other putative member whose application had been rejected on a technicality nevertheless expressed enthusiasm and was co-opted. The first meeting was held in Earlsferry Town Hall on 3rd October under the auspices of the elected East Neuk and Landward Councillors and



the following office bearers were established. Chair Angela Anderson, Vice Chair Carol Blrrell, Minutes and General Factotum (should that be Factota ?) Grizelda Cowan, Treasurer Cath Macintosh. The other members were Kirsty Barclay and George Cowan. It is of some interest that enthusiasm for such office seems have waned in the East Neuk. Anstruther Kilrenny had too few applicants and no community council was established but we understand that a petition has now been presented to Fife Council by the required number of residents to ask it to re-establish the Anstruther and Kilrenny CC. The full list of the community councils shows that of the possible number of community councils only about 68% actually have been constituted. – that is 72 out of a possible statutory number of 107. There is a perception that these councils are superfluous and merely pay lip service to “democracy in the community” since they have very little power. However they do act as a conduit to and pressure group on Fife Council and its councillors to address purely local issues. Fife is a particularly diverse demographic. The main council obviously decide policy for the whole area but it would be easy for the full council to ignore different communities requirements when dealing with the broad Fife wide policy. This is particularly relevant in Planning where the requirements and expectations of one community may be very different from another. The community council provides a useful and effective bridge between its community and the planners. We have often tried to impress upon our community to draw up protocols which the planners might have in mind that reflects the local view of developments. (q.v. supra)



## EEAG

As a result of the overwhelming generosity of the Elie people we have managed to accumulate a good fund to improve the look of the village. We are looking at more permanent boxes and troughs in the entrances of the village. We have and will continue to plant lots of crocuses in the green spaces at the village entrances which hopefully will provide an early burst of spring colour. The Sports Club have also asked us to take over some of the

planters in their precincts to brighten up the floral arrangement which we are looking at and planning. We hope to make the roundel at the car park at the golf club into a flower border with perennials and annuals. We are looking to re-deploy the golf club barrels in more prominent positions in the village and we have managed to salvage Phillip Scott's boat which has lain uncared for on the bents. We have re positioned it at Ferry Road and at the request of his family have named it “Phillip Scott”. Jo and Keith whose Earlsferry boat has proved so admired are taking over the boat now placed at the Ferry Road entrance. We will probably cut down the number of planters at Chapel Green because their remoteness makes watering very difficult - which we hope to sub contract for next spring and summer. We are looking at offering sponsorship of barrels/containers etc. by commercial businesses and also for family remembrance. If you are interested in sponsoring one of our displays please contact us at [elieearlsferry@gmail.com](mailto:elieearlsferry@gmail.com) Please also let us know of any other ideas as to how we can brighten up the village both for residents and visitors.

## History Society Calendar

The History Society has produced a calendar for 2024 in two formats. A4 and slimline. The images are some of the postcards which we have in our collection which we have enhanced and in some cases coloured. Please email us at [elieearlsferry@gmail.com](mailto:elieearlsferry@gmail.com) if you want some more information - they would make ideal presents for your absent families to remind them of great times in the village. They cost £15 each. Available at Hist Soc meetings



EARLSFERRY THISTLE  
GOLF CLUB  
INSTITUTED 1875



## Golf Clubs 150<sup>th</sup> Anniversary

We have spoken before of the importance of 2025 which will celebrate the 150th anniversary of the founding of both Golf House Club and Earlsferry Thistle. If you are interested in the history of the formation of these two clubs see [www.eliehistory.com](http://www.eliehistory.com) website. We know that on 13th May 1875 nine golfers met in the offices of the local bank and determined to set up the Golf House Club. We also know that a few weeks later, probably in response, four golfers from Earlsferry (actually three from Earlsferry and one from Elie) set up the Earlsferry Thistle Club. Both these clubs have brought huge benefit to the village and we believe that in addition to such celebrations as they may individually or jointly have, it is incumbent on the village and community to honour the occasion in 2025.



The community council has resolved to set up an advisory group to examine what could be done village wide. Inter alia currently going the rounds is a suggestion that a statue of James Braid be commissioned and placed at a strategic point within the golf course precincts. Something along the lines of above could be sited alongside the 18th tee in the area of ground in front of the Thistle clubhouse or perhaps in the roundel at the car park of the golf club. Wherever it would not only honour the memory of James Braid but also the 40 or so young men from the village who went to



pioneer the game elsewhere in the world. The estimated costs are in excess of £100,000 so it might well be beyond our village's capacity. (see [www.eliehistory.com](http://www.eliehistory.com) for biographic details of these men). The History Society plans to have an exhibition sometime in May/June 2025 to tell the history of the course, the clubs and the golfers which have made Elie so important on the golfing map.

---

## Woodside Playpark

**Y**ou may recall that a group of concerned parents from the PTA of the primary school decided to try to upgrade the play park at Woodside. Not only had it fallen into some disrepair the actual facilities were rather out of date for today's energetic youngster. Fife Council which owns the area of ground has stated that any playpark refurbishment or renewal will be required to conform to stringent safety standards (quite right too) but that to fulfil the ambition something in excess of £100,000 would be required. Fife Council do not have the funds (there's a surprise) and whilst they would contribute, a considerable sum would need to be found by the community to make up the balance. In all honesty it is going to depend upon a huge benefactor or monumental fund raising to reach the target. The question then arises as to whether for an expenditure in excess of £100,000 would it be used enough to justify that price tag. During the Charette (remember that!) one of the things highlighted was the need for such a play park. The school role is currently at its lowest level for many years and there is anxiety that we could lose the primary school altogether. If that were to happen the use of Woodside play park could be limited to perhaps young holiday makers and the offspring of second home owners. Further more in terms of the planning permission in principle granted to Elie Estates to develop the ground at Wadeslea there is the following condition...."This application is subject of a legal agreement relating to ..... a contribution of £1,000 per residential unit towards open space/play." It would seem that this potential fund might be used to fund a play park but the location thereof might be more suitable within the confines of the new development. However that is all speculation at the moment – what remains is the huge task of trying to find the necessary funds for Woodside park.

---

## Elie Estates Development

**I**n our previous issue we were privileged to have a report from Elie Estates as to their progress with the developments at Wadeslea and the Grange. In the course of which it was reported "..... Agreement has .. been reached with Scottish Water and SEPA over upgrades to the sewage network and the foul water solutions for both Wadeslea and the Grange." Reaction to this statement has been one of scepticism. Some are inquiring exactly what the arrangements that SEPA and Scottish Water are making since it is perceived that the current infrastructure is insufficient to meet the normal off season needs of the community without the addition of some 80 new homes linking into the antiquated system. The community council is trying to find out the detail of this but ex facie what the developers state such problems as may have previously been highlighted have now been resolved. The sceptics remain to be convinced!

## Quiz time

A few questions from the History Society quiz in September

1. What was the name of the family that had the Kin-craig estate near Shell Bay? A/ Nairn B/Gourlay C/Duddingston d/Malcolm
2. What was believed to be the country of origin of the bones found at the top of Glovers Wynd during excavations for a new road in 1840s? A/Spain B/England C/Denmark D/Holland
3. Admiral James used to live in Wynd House – what was the product he advertised?
4. For what was it that L. Brattesani sought permission to open in 6 School Wynd in the 1930s? A/Ice Cream shop B/Bed and Breakfast C/ snooker hall D/Italian language school
5. The sometime proprietor of Chapel Green House was a Mr. Henry what was his occupation? a/lawyer b/ gunsmith c/ vacuum salesman d/travel agent
6. Who was beaten by Cyril Tolley in the final of the British Amateur golf championship in 1929?
7. What do Arizona, Wearbridge, Peace and Plenty and Wanderer have in common?
8. On which golf course is there a hole named "Braid's Brawest"?
9. What sport did the Elie Crusaders play? a/bowls b/curling c/ football d/rifle shooting
10. What did the Vipianas (the Baron of Elie and St Monans) start making after the end of the second world war which led eventually to the fashion house Celine?
11. What was it that George Bush Senior saw when he came up the fifth fairway playing golf? a/Bert Hughes b/ a cow c/ the stars and stripes d/ golden eagle
12. What was it which was imported from India which sounded the death knell of the Earlsferry weaving industry?
13. Who was the minister of Kilconquhar church who used to ride down to Earlsferry on a white charger to deliver his fortnightly sermon at Earlsferry Town Hall?
14. During world war 2 what was situated on the roof of Earlsferry Town Hall? a/ Look out post b/ barrage balloon c/ air raid siren d/St Andrews flag

Answers later

---

## Scottish Power and Toll Green

**A**s you may know there is a power outlet and meter at Toll Green. It is used almost exclusively for the Christmas lights but the defibrillator at the bus stop also relies on this source. Apparently Scottish Power is dramatically increasing the standing charge which at the moment, unless an alternative is found, might mean that the power source of Toll Green would need to be abandoned. The knock on effect would be the lack of power to the defib. This would be serious. We are a little surprised that Scottish Power make no concessions for this life saving equipment but perhaps they do. One alternative might be to link into Toll Green Hall and make some arrangement to share that standing charge and thus the charge would only be for consumption ...we will have to wait and see what deal Fayre day manage to

make with Scottish Power.

## Retirement of Shona Jones

Whilst on the subject of Fayre day Shona Jones has demitted the chair of that group. It almost goes without saying how much the village has relied on Shona's indefatigable enthusiasm for everything village wise and her boots will be hard to fill. The History Society acknowledged Shona's contribution to the life of the village by presenting her with the "David Thomson" award. This is an occasional award in memory of David Thomson, the History Society's founder, for those who have made a significant contribution to the life of the village. Previous recipients include the Sangsters and Ardross. Here is Shona with her award.



number of possible attendees difficulty. There was a suggestion that the Monument Park (aka Deer Park) alongside the main road could be turned into a car park and people could walk from there down to the beach but again this necessitated a large number of people crossing a very busy road with little regard to the safety of pedestrians and an army of supervisors not to mention traffic managers. It is after all a victim of its own success in that so many people come from far and wide to enjoy these fireworks. It is a tribute to the entrepreneurial ethos of the Ship that it has hosted the event in previous years and it would be a pity if it had to be abandoned for health and safety reasons but that is paramount to the 15 minute spectacle of fireworks being let off. The Ship Inn have worked really hard to try to accommodate all the various agencies who have raised objections to the plans but it has just proved impossible. If you are an animal you need no longer alert your diary to 5th November. Regretfully it looks as if Guy Fawkes is a thing of the past (he of course always was - boom boom).



## Churches

Again we have visited this story before but the Church of Scotland has resolved to reduce its portfolio of buildings which includes churches. Elie St Monans and Pittenweem are on the list for disposal. Crail are having a think about how their's could be used. What can we do? Our church does not really lend itself to much alternative uses. Earlsferry Town Hall and Toll Green have filled the gap of a community hub. We suppose it could be used as a reading room, library, small concert area, craft workshop and even small bakery, coffee shop etc but this would involve substantial expenditure at a time when some other village projects are seeking funds (see playpark *supra* and water fountain Herald *passim*). Not least is the substantial repair that would be needed to keep it wind and watertight. Pittenweem we understand has formed a committee to look at their premises and the East Neuk Preservation Society is active in this scheme but the lack of funds is a major obstacle. This should be a matter that Scottish Government should address unless it is content to lose so much of its history and architecture. Any ideas gratefully received. Even better pledging of funds welcome.

We have had occasion to test the medical facilities in this part of the world. St. Andrews Minor injuries clinic performed excellently when given the editor's damaged hand (don't ask!). A referral to Ninewells plastic surgery department was essential and again the performance of the staff there was exemplary. What has been slightly more problematic however has been the availability of a nurse led dressing change. It seems that our local practises no longer have nurses available to change dressings and it has been centralised in Anstruther. Apparently there is a chronic shortage of nursing staff and it may be that the better alternative is simply to present at the minor injuries unit at Saint Andrews where you get excellent service. And what is more you become a statistic showing that the facilities at Saint Andrews required to be kept open for the local population. There was a threat two years ago to close down the unit altogether.



## Fireworks

It was obviously a disappointment that the Ship Inn had to cancel the fireworks display on the 4th of November. Despite the best efforts of the Bucknalls at the Ship it was decided that the organisation was too complex and risky to proceed this year. There are a number of problems which are difficult to address. The main is that experience has shown that as many as 3000 people could be expected at the Ship Inn fireworks display. It is just not possible to accommodate safely that number of people in the narrow confines of the Toft and the beach at the harbour. Considerable concern was expressed that in the event of some panic the squashing of people into the small lanes about the Toft could be catastrophic. Various alternatives were looked at - like ticketing, like changing the venue etc, but they all came up against the



## Sports Club Developments

The Sports Club have now received permission to install a number of padel (spelck not happy) tennis courts. As we noted before this seems to be the up and coming sport for those of us less agile. Subject to the availability of funds it is hoped that these courts will be up and playable by Easter but we hope to have a more up-to-date report in our next issue. So dust out your gym shoes, get your shorts and Fred Perry polo shirt out of storage... ready steady gggggo



## Blast from the Past



Dundee Courier 1921

### RAIDERS OF ELIE GOLF TAVERN GET TWO MONTHS' IMPRISONMENT.

The trial of the two men arrested in connection with the recent burglary at Golf Tavern, Elie, took place in Cupar Sheriff Court yesterday. The accused men are Andrew Robb\*, an ex-naval stoker, at present working as a labourer at Earlsferry, and James Webster, a discharged marine, residing at Earlsferry, and they were charged with having, on 11th or 12th June, broken into the Golf Tavern, and stolen 9 bottles of stout, 8 bottles brandy, 5 bottles of port, 13 bottles of gin, 2 bottles of claret, and 24 packets of cigarettes. Margaret King or Robertson, proprietrix the Golf Tavern, said everything was in order when the premises were shut on Saturday night. Next morning she found the window was broken and the snib turned. The value of the stuff taken was about £15, some of which was produced and identified. Cross-examined by Mr T. D. Murray, Anstruther, who defended the accused, witness stated that Webster was very drunk when left he 9 p.m. on Saturday night. She did not think it was possible for Webster to have broken into the premises and carry away three dozen bottles of liquor, considering the state he was in.

*Found on Golf Course.*

Police Sergt. Todd spoke to the police attention being drawn about 9 p.m. on Sunday to the accused lying on the golf course under the influence of drink. A bottle of gin and three packets of cigarettes were found on Webster and bottle of stout and three packets of cigarettes on Robb. Both men, when arrested and charged, said they knew nothing about it. Webster, for the defence, giving an account of how they came to be in possession of the liquor and cigarettes, said that he and Robb were walking the sands near the fishermen's hut. A little boy kicking a cork on the sands called to him, and when he went over he found that the boy had kicked up some packets of cigarettes, while the necks of the bottles were sticking out of the sand. They were thirsty after the drink they consumed the previous evening, and they drank the liquor instead of giving it to the police. Robb corroborated the story. His Lordship, in passing sentence of two months' imprisonment on each, said he regarded the whole defence as an invented story, and thought the only reasonable explanation of their having the stolen property was that they took it.

*\* Andrew Robb was a well known Earlsferry character and a permanent feature of the 19th hole. Such living as he earned was as a caddy and such as he earned finished up in the till of the 19th Tavern and thence elsewhere. One evening he told us he had not been well and that he had slept on the beach (his normal routine apparently) and had woken up unconscious.*

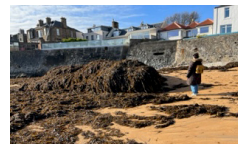
## Las Tricoteuses Corner



Our a lovely old post box acquired a scarecrow at the last festival and having survived the vagaries of the summer has produced offspring. The knitters of the village have been busy and it really is delightful to see. Remembrance is suitably remembered - lets hope heads will not roll from these splendid works.



## Stormszzzzzz



It comes as no surprise to say that the village suffered as a result of the recent named storms – why are they more severe when they are given names – it's almost as if they have something to prove. We have for a number of years been going on about the erosion of the bents and the most recent storms have added to the impact. The rock armour carefully deployed at the Earlsferry end has been exposed and the sand washed away. However it seems to have done its job and the bents there is relatively secure. There is a perception that these storms are unusual although within current recollection on some occasions the sea has reached the walls of some of the gardens, and indeed one year a considerable number of beach huts were washed away before the proprietor had an opportunity to salvage them. So are things getting worse or is this just the cycle that one can expect from the vagaries of the weather. One reads of catastrophic storms in the 18th and 19th centuries which must have been as violent if not more violent than the ones we're experiencing at the moment.



Perhaps this is just the way nature asserts itself. The coastal path between Ladies Tower and Ardross has suffered serious erosion and it is now closed. Please do not climb over Ardross fence and disturb the cattle but take the alternative if walking from Elie to Ardross via the main road and vice versa.

## Remembrance Ceremony

There was a very encouraging turn out for the remembrance ceremony at the war memorial. The bagpipes, last post and Big Ben (in the absence of



our church clock - a victim of the storms) all featured and Allan Provan gave his dedication. Wreaths were laid on behalf of the the Lord Lieutenancy of Fife, Fife Council, the Community Council, ENT church, St. Michaels and all Angels, the Royal Voluntary Service and the Primary school. It is so gratifying to see so many of the villagers turning out for this Remembrance ceremony.

## Soap Box

It might be thought that Remembrance Sunday is an irrelevance in the current day and age and that it merely historically glorifies war and the conflict of arms. But whilst that may be a part of the ceremony - to honour those who had fallen - it should also serve as a reminder to us all of the devastation of the major conflicts of the 20th century. Others say the message that should come out of this ceremony is the horror and indeed futility of war, and a fervent desire to avoid any further such conflicts - whatever their source. If that happens then these ceremonies serve their purpose.



## Earlsferry Town Hall

The Town Hall group has worked hard and their programme is now busy and varied.- for full details [earlsferrytownhall.co.uk/whatson](http://earlsferrytownhall.co.uk/whatson)



But here is a flavour – Mahjong second and fourth Thursdays, Bridge club first and third Thursdays, Table Tennis Tuesdays, Cine night Still Crazy 17<sup>th</sup> November. And there will be a full programme during the festive period .

## Festive Catering



Festive options throughout December, Special Festive Afternoon Teas please book, Open daily 10 - 4 - short festive break for a rest



see facebook for details.



Festive catering see website but you'll need to get in quick spaces filling up fast.

### DATES FOR YOUR DIARY

**16 Nov 23** – History Society AGM and Talk (Church Hall 19.00 AGM 19.30 Talk – FHR/the new Levenmouth Rail Link)

**2 Dec 23** – ENT Church Christmas Fair (see posters for details)

**1<sup>st</sup> Dec** 1 pm Elie Church Orla Jones

**9 Dec 23** – Reflective Service at Elie Church 3 pm all welcome

**14 Dec 23** re-arranged History Society Lecture Professor Anthony Lodge - Kellie Castle before the Lorimers. 7.30 Church Hall

*The Elie Herald is a free publication; However, we welcome donations. Any surplus after production costs is donated to local groups. The views expressed are solely those of the editor.*



The [Elie Herald](http://www.elieandearlsferry.net) welcomes feedback constructive or destructive and we can be contacted at [info@grahamjohnston.scot](mailto:info@grahamjohnston.scot) or [elieearlsferry@gmail.com](mailto:elieearlsferry@gmail.com) if

you want to look at previous editions visit:

<http://www.elieandearlsferry.net>

Edited by Graham Johnston with initial lay out help from Graham Meacher.

